

nCounter™



Quick Start Guide

Version 2.0

CONTENTS

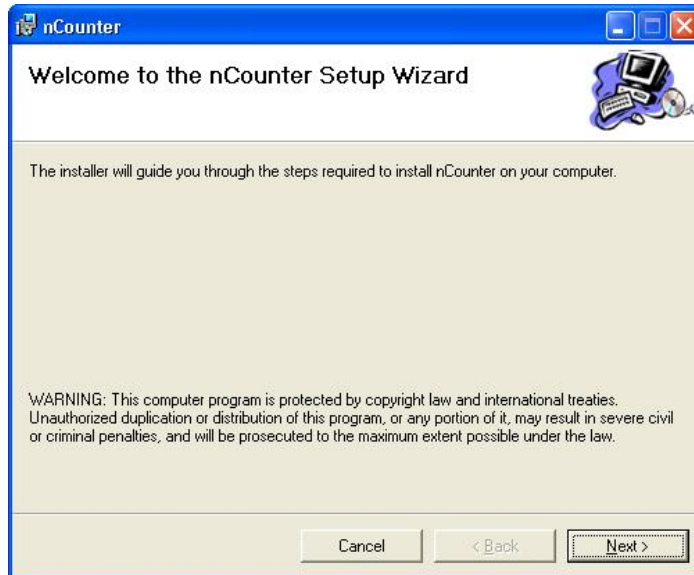
INSTALLATION **2**

OPERATION **3**

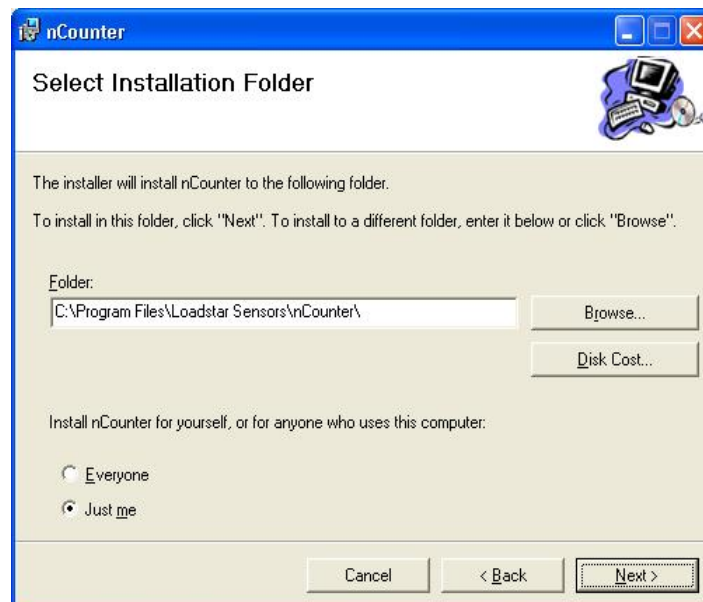
INSTALLATION

Download the nCounter file or insert the USB Stick it came on into USB port. The installation Wizard should start up automatically. If it does not, click **Start...Run....** and use the **Browse** button to select X:\setup.exe where X: stands for the letter of your drive where the USB Stick is placed.

Click OK until the nCounter setup screen appears. Click **Next**.



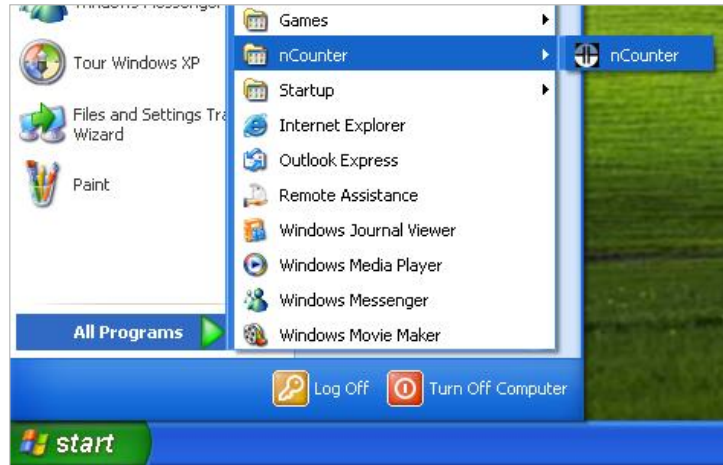
Select the installation folder. Click **Next** twice and nCounter will be installed.



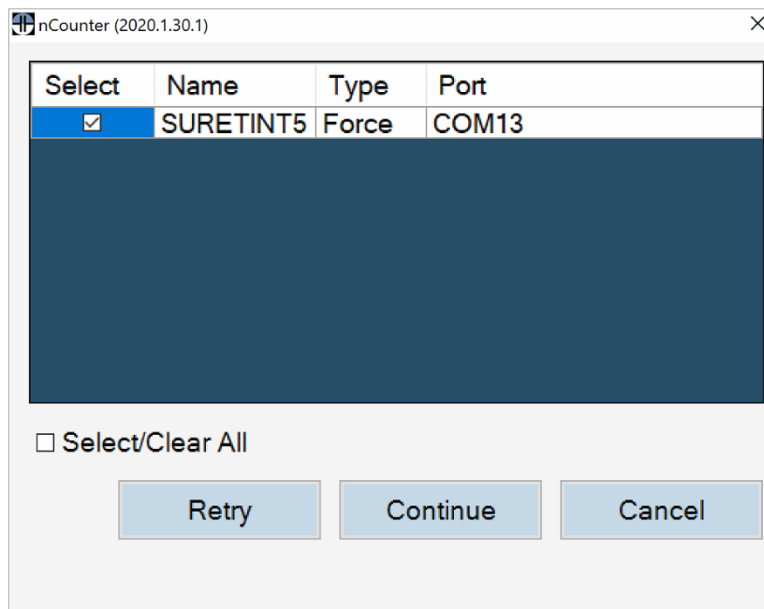
Note: nCounter requires the presence of Microsoft .NET Framework. If your computer does not have it, you will be prompted to install it. You can find Windows Features Setup on your PC and check on the .Net 3.5 or .Net 4.0 to activate it. It will download needed files from the Internet automatically and set it up for you

OPERATION

To run nCounter, click **All Programs...nCounter** or double-click on the Desktop shortcut for nCounter.

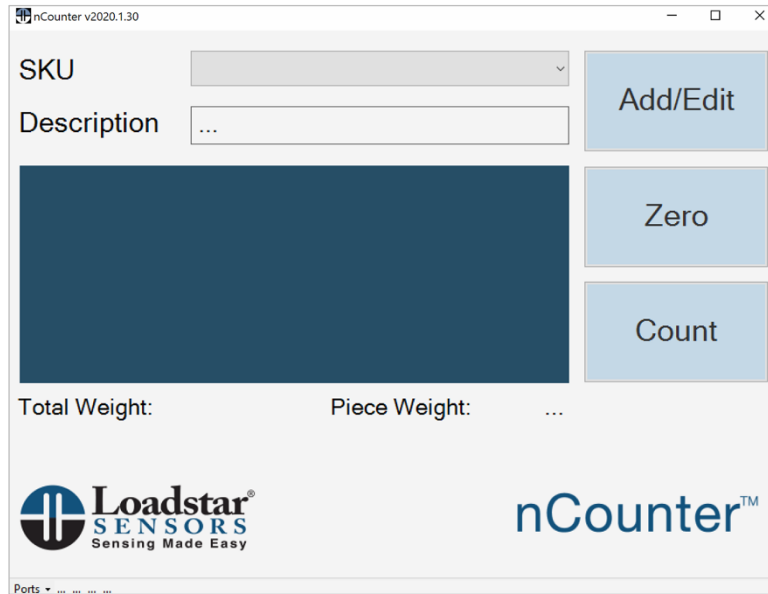


nCounter will scan all installed COM ports for attached sensor.

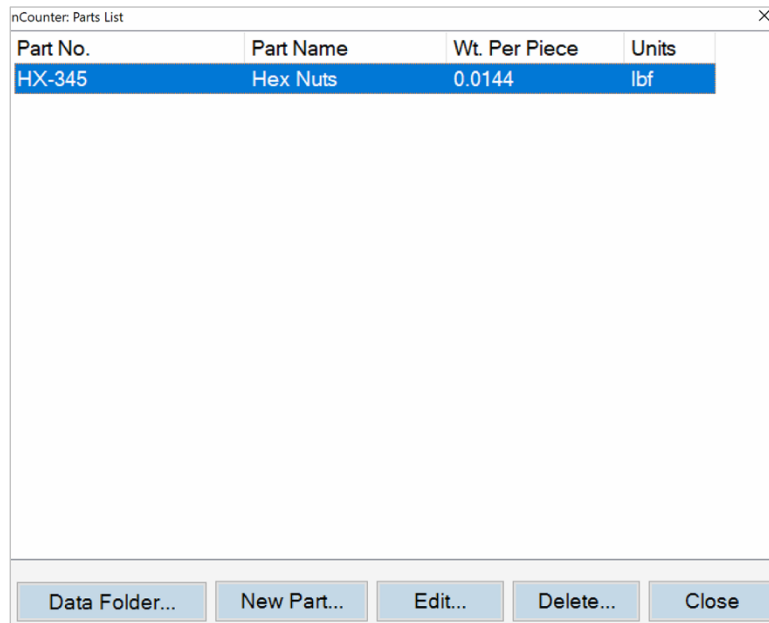


Click Continue.

Note: Loadstar Sensors Drivers should first be installed for the sensor to be detected.



Click **Add/Edit...** to show the Parts List window. Select an existing part you want to count from the dropdown list.



Or Click **New Part...** to create a new part. The Part Details window is shown.

nCounter: Part Details

Part No.:

Part Name:

Weight Per Piece: lbf

To calculate weight per piece:

1. Empty the scale and click Tare ->

2. Place a known number of piece on the scale.

3. Enter the number of pieces here ->

4. Click Calculate ->

Enter Part No., Part Name and Weight per Piece.

If you do not know the weight per piece, use the following steps to calculate it:

1. Select the correct units for the part.
2. Empty the scale and click **Tare**.

nCounter: Part Details

Part No.:

Part Name:

Weight Per Piece: lbf

To calculate weight

1. Empty the scale an

2. Place a known num on the scale.

3. Enter the number of pieces here ->

4. Click Calculate ->

nCounter

i Tared

- Place a known number of pieces on the scale. To get the most accurate weight per piece, especially for small parts, you should place enough parts that weigh a total of at least 10% of the scale capacity, i.e. if you have a 50 lb scale you should at least load the scale with 5 lb of parts.
- Enter the number of pieces.
- Click **Calculate Weight per Piece**.

nCounter: Part Details

Part No.:

Part Name:

Weight Per Piece:

To calculate weight

1. Empty the scale and tare.

2. Place a known number of pieces on the scale.

3. Enter the number of pieces here ->

4. Click Calculate -> **Calculate Weight per Piece**

OK Cancel

The weight per piece is now automatically entered in the Weight per Piece field. Click **OK** to save the part information and return to the Parts List Window.

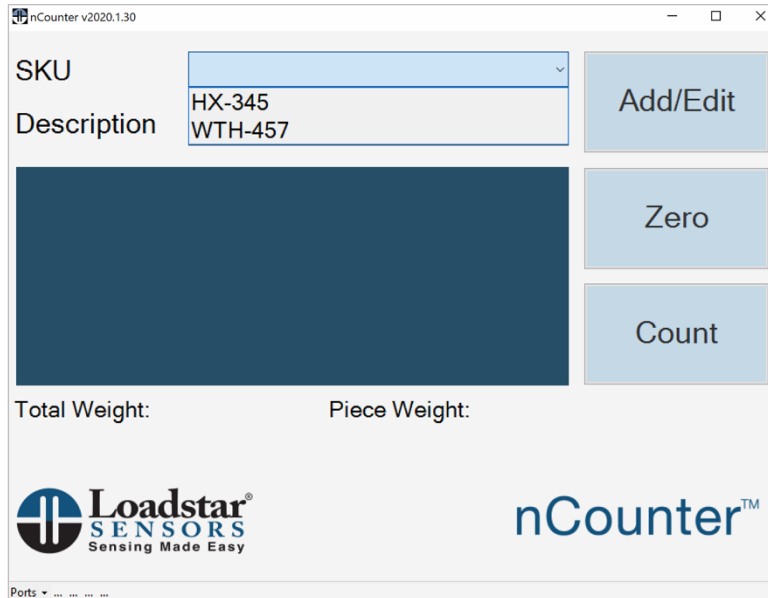
nCounter: Parts List

Part No.	Part Name	Wt. Per Piece	Units
HX-345	Hex Nuts	0.0144	lbf
WTH-457	Werthers Original	0.0072	lbf

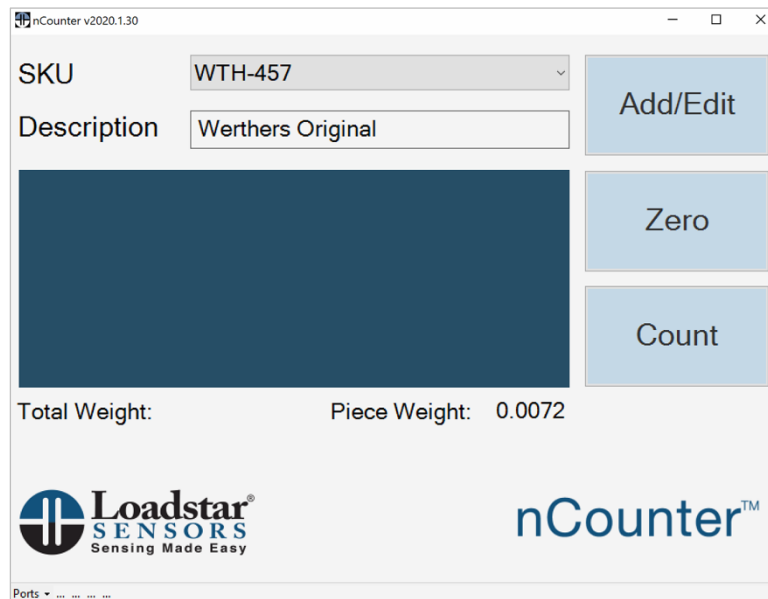
Data Folder... **New Part...** Edit... Delete... Close

Click **Close** to close this window and return to the main window.

To select a part to count, Click on the arrow next to the Part No. / Name field in the main window to select the desired part.

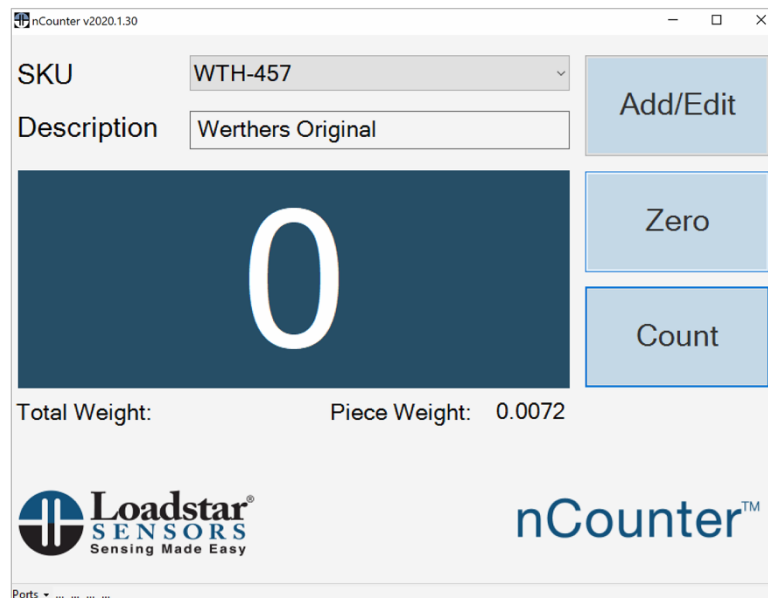


Select the part you want to count from the list. The SKU and Description of the part will appear as shown below.

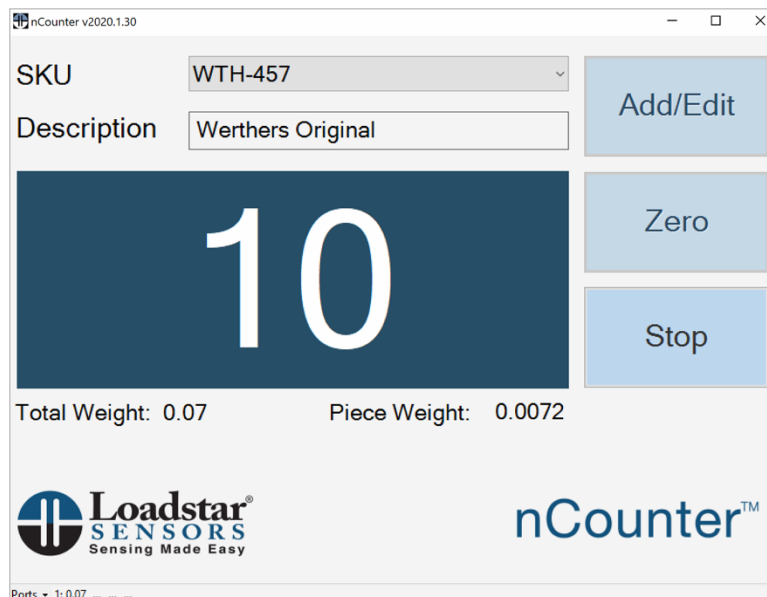


With no parts on the scale (only the weighing bowl) click Zero to Tare out the scale.

Then add parts and click **Count** to start counting the parts. **Be sure to Tare the scale every time before taking readings.**



Click **Stop** to stop reading the scale. The actual weight measured as well as the piece weight per unit of the item are shown under the Count for your convenience.



Watch [nCounter Demo Video](https://tinyurl.com/t4ypn3p) (<https://tinyurl.com/t4ypn3p>) for a quick glance at setting up and using nCounter solution.

That's It! If you have any difficulty while installing or using the application, please reach out to us via email at support@loadstarsensors.com or call us at 510-274-1872.



Loadstar[®]
SENSORS
Sensing Made Easy

loadstarsensors.com

48521 Fremont Blvd., Suite 308 Fremont, CA 94539

Ph: (510) 274-1872