

www.loadstarsensors.com/assets/manuals/html/how-to-set-latency-timer/latency-timer.html

Refer to the instructions in this guide:

port in use to 1 ms.

5. For optimum data update speeds, please set your latency timer for the COM

can then double click on the icon to launch the software.

Desktop. Connect your load cell and interface to your PC via USB ports. You

AND the Drivers are installed. You should see an icon for the software on your

4. Follow the instructions until setup is complete. Make sure that the Software

3. Right Click on the Setup file and Run As Administrator

2. Locate the Setup file

style Port) or Download the software from the link provided

1. Insert the USB Drive provided into your PC's USB Port (you need a full USB A

Follow these Steps to Install the Software on your PC:

## How to Install

## Features

Display Data

Log Data

Plot Data

Support Load Cells/Force/Weight

Support Multiple Sensors

Support Multiple Sensor Types

Control External Devices

Remote Support

Re-Calibration



## Help

loadstarsensors.com/assets/specsheets/software.pdf

loadstarsensors.com/controlvue.html

support@loadstarsensors.com

## Watch

Setup & Installation: [youtu.be/Pso6Rbem1So](https://youtu.be/Pso6Rbem1So)

Upgrading: [youtu.be/dkQAD1AgnuE](https://youtu.be/dkQAD1AgnuE)

Set Latency Timer: [youtube.com/watch?v=HSJX3kK3WJU](https://youtube.com/watch?v=HSJX3kK3WJU)

## Access Detailed Information

Scan the QR Code Or

Visit: [loadstarsensors.com/controlvue.html](https://loadstarsensors.com/controlvue.html)

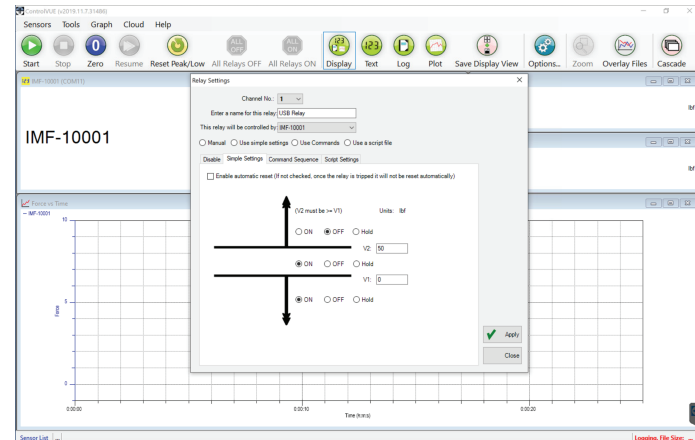


## ControlVUE (CV-1000)



Multi-Channel Software to Control External Devices

Display, Log, and Plot Data from Multiple Sensors of All Types



## Minimum Requirements

Windows 8/10, 8GB RAM