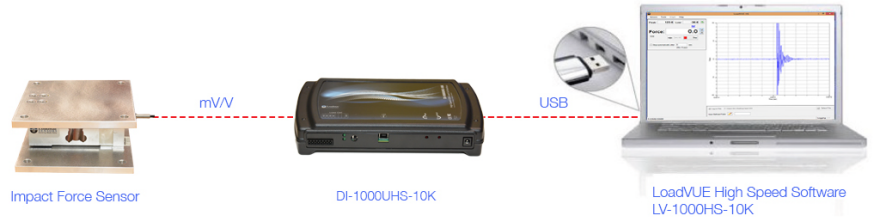




Impact Force Kit - 50 KHz

Impact Force Measurement Solution with USB Output with Data Capture Rate upto 50 KHz



Included

- Impact Force Sensor
- DI-1000UHS-10K Interface
- LV-1000HS-10K Software
- Power Supply
- USB-A Male to USB-B Male Printer Cable



1 Connect

Connect Terminal Block from Load Cell to DI-1000UHS-10K

Connect Power Supply to the DI-1000UHS-10K

Make Sure the Wires are Properly Connected into the Terminal Block

Ensure Terminal Block is firmly inserted

Connect USB-A to USB-B Printer Cable to your PC

2 Install

Install LV-1000HS-10K LoadVUE High Speed Software

Right-click on Setup file and Run As Administrator

If Instacal Program is Not Installed Automatically,

Install it Manually from C:\Program Files (x86)\LoadstarSensors\Drivers

Run Instacal ONCE on the PC that you will use it on

3 Calibrate

Your System is ALREADY CALIBRATED, No Need to Calibrate!

Setup your Sensor by Clicking on "Select/Configure" Button

Enter the lb/volt Provided on your Calibration Certificate before Use

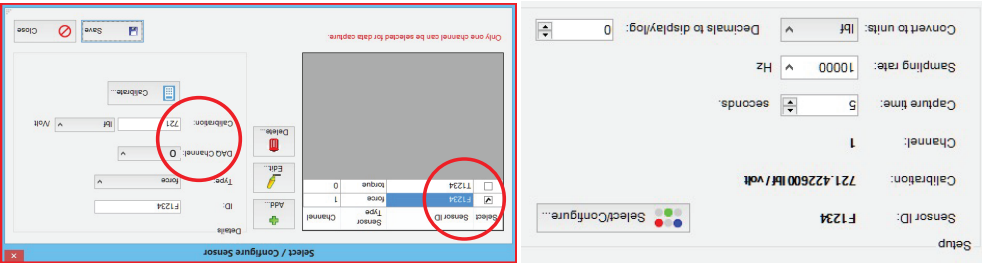
4 Use

Tare or Zero out the System Before Use (System should return ~ 0.5 VDC)

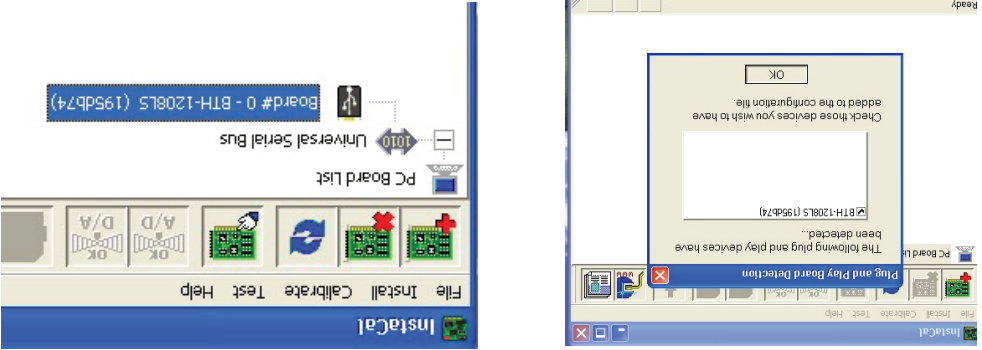
Select Time Duration and Data Rate

Press Start

Setup your Sensor's Calibration Value from Certificate



Run Instacal Once Before Using LV-1000HS-10K



Help

loadstarsensors.com/specsheets.html

loadstarsensors.com/assets/specsheets/di1000uhs10k.pdf

loadstarsensors.com/assets/manuals/di-1000uhs-10k-user-guide.pdf

loadstarsensors.com/assets/manuals/lv-1000hs-10k-user-manual.pdf

loadstarsensors.com//impact-force-measurement.html

support@loadstarsensors.com

Watch

Setup Impact Force Kit (50 KHz): youtu.be/Mrc6fUjTJYO

Measuring Impact Forces (50 KHz): youtu.be/ipQYWKRNZOI

Access Detailed Information

Scan the QR Code

Or

Visit - loadstarsensors.com/impacto.html

