

www.loadstarsensors.com/assets/manuals/html/how-to-set-latency-timer/latency-timer.html

Refer to the instructions in this guide:

port in use to 1 ms.

5. For optimum data update speeds, please set your latency timer for the COM

can then double click on the icon to launch the software.

Desktop. Connect your load cell and interface to your PC via USB ports. You

AND the Drivers are installed. You should see an icon for the software on your

4. Follow the instructions until setup is complete. Make sure that the Software

3. Right Click on the Setup file and Run As Administrator

2. Locate the Setup file

style Port) or Download the software from the link provided

1. Insert the USB Drive provided into your PC's USB Port (you need a full USB A

Follow these Steps to Install the Software on your PC:

How to Install

Help

loadstarsensors.com/assets/specsheets/software.pdf

loadstarsensors.com/loadvuepro.html

loadstarsensors.com/assets/manuals/LV1000UserGuide.pdf

support@loadstarsensors.com

Watch

Setup: youtu.be/KcGNtGxkhFo

Installation: youtu.be/PSOTVpbItJU

Upgrading from LV-100: youtu.be/dkQAD1AgmuE

Setting Up Latency Timer: youtu.be/HSJX3kK3WJU

Calibrate using LV-1000: youtube.com/watch?v=SoAlayLRweo

Access Detailed Information

Scan the QR Code Or

Visit: loadstarsensors.com/loadvuepro.html



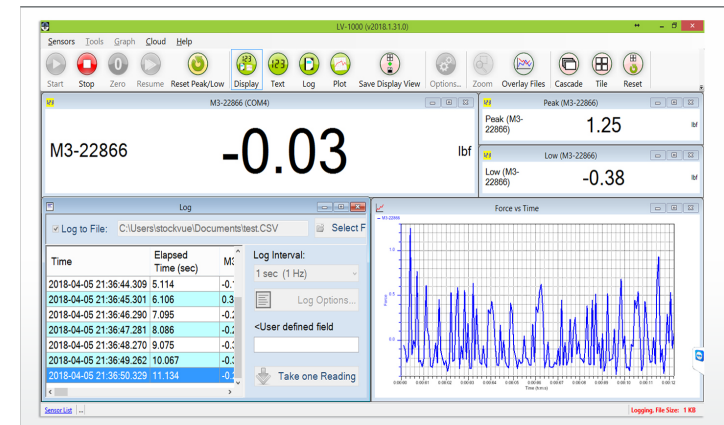
Features

- Display Data
- Log Data
- Plot Data
- Support Load Cells/Force/Weight
- Support Multiple Sensors
- Support Multiple Sensor Types
- Control External Devices
- Remote Support
- Re-Calibration

LoadVUE Pro (LV-1000)

Single Channel Software

Display, Log, & Plot Load/Force/Weight Data on a PC/Tablet



Minimum Requirements

Windows 8/10, 8GB RAM